

EXHIBIT PRICES (10% Consumption Tax Included)

Please note that all overseas exhibitors shall be charged "Overseas Exhibitor Processing Fee" of JPY 4,400.

Application Deadline

July 18th (Fri), 2025

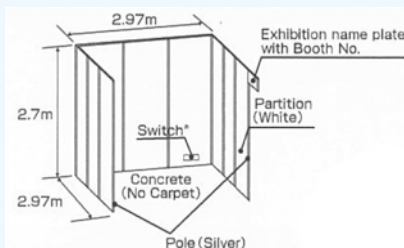
Payment Deadline: August 29th (Fri), 2025

Standard Booth

(Space Only)

2024 Exhibitor **JPY 517,000-**
First time/Before 2024 Exhibitor **JPY 561,000-**

- Facilities included:
- Side and back partitions (white)
- Exhibition name plate with Booth No.
- Electrical wiring work for 100V / 300W (a breaker switch only - no outlet)



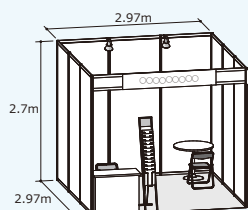
GET YOUR BOOTH NOW!

(Note) ●For corner booths, no partitions will be installed on sides facing aisles, in this case, fascia boards will be installed on the aisle sides.
●There will be no partitions within booths occupying 2 space units or more.

Package Plan

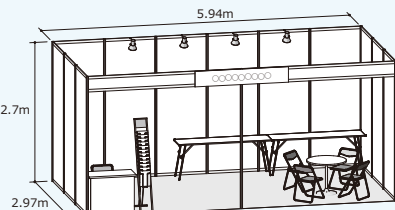
1 Booth

2024 Exhibitor **JPY 662,200-**
First time/Before 2024 Exhibitor **JPY 706,200-**



2 Booths

2024 Exhibitor **JPY 1,324,400-**
First time/Before 2024 Exhibitor **JPY 1,412,400-**



Items	1 Booth	2 Booths
Side & back partitions (White)	○	○
Exhibition name plate with Booth no.	1pc	1pc
Fascia	○	○
Exhibitor's name plate	○	○
Carpeting	○	○
Power outlet (100V/934W/Japanese Type)	1pc	2pcs
LED Fluorescent light (21W)	1pc	2pcs
LED Arm spotlight (15W)	2pcs	4pcs
Electric wiring work (100V/single phase)	1kW	2kW
Electric charges for 4 days (Second Move-in Day and Exhibition Days)	○	○
Information counter	1pc	1pc
Display table	-	2pcs
Round table	1pc	1pc
Folding chair	2pc	5pc
Catalog stand	1pc	1pc

OPTION MENU

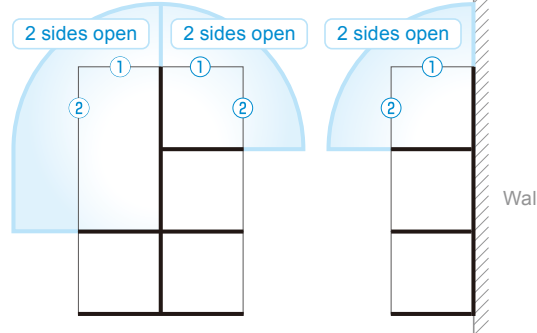
Corner Booth (For 1-2 booth ONLY) (Limited/First come first serve)

This ticket is required to secure a corner booth.
If you apply for more than 3 booths, corner will be guaranteed free of charge.

Price: JPY 88,000
(10% tax incl.)



Corner booth ticket



RULES & REGULATION

Payment

Payment should be made in JAPANESE YEN ONLY.
All overseas exhibitors shall be charged "Overseas Exhibitor Processing Fee" of JPY 4,400. (10% tax incl.)

Payment Deadline

August 29th (Fri), 2025

Cancellation by the Exhibitor

- The Exhibitor shall not withdraw or cancel whole or a part of the application for the Exhibition (including reducing the number of booths; hereinafter, the same shall apply) unless otherwise the Organizer accepts it.
- In case the Organizer accepts the withdrawal or cancellation of whole or a part of the application for the Exhibition by the Exhibitor, the Exhibitor shall pay the cancellation fee as follows:

Deadline	Cancellation Fee
FROM the next day of each application deadline (early, normal) TO the preceding day of the day described in the next column.	50% of the Fees (excluding tax)
FROM the day of the orientation meeting of the Exhibition that the Exhibitor attends, or the day of the announcement of booth layout, whichever comes first.	100% of the Fees (excluding tax)

The "deadline" set forth in the column above shall be judged at the point when the manifestation of intention of the withdrawal or cancellation of all or a part of the application for the Exhibition reaches to the Organizer. In addition, in case of the withdrawal or cancellation of a part of the application for the Exhibition, "Fees (excluding tax)" for the calculation of cancellation fee shall be the Fees (excluding tax) corresponding to such withdrawal or cancellation.

***Please read the "Exhibition Rules & Regulations" carefully at the back of the application form!**

How to Apply

From website



Download the PDF application form online and fill in the blanks.

send to bmhf-cl@jma.or.jp

Confirmation Email

Receive an confirmation email from the secretariat.



Receive an invoice of payment from the secretariat by email.

<https://www.jma.or.jp/BMCL/en/>

※Exhibitors can also download the PDF of the Application Form if necessary and send to bmhf-cl@jma.or.jp.

Exhibitor Brochure

BUILDING MAINTENANCE & CLEAN EXPO 2025

Date |

November 19th (Wed.) ~ 21st (Fri.), 2025

Venue |

Tokyo Big Sight West Hall



Organizer |

Japan Building Maintenance Association
Japan Management Association

For further information |

<https://www.jma.or.jp/BMCL/en/>

BUILDING MAINTENANCE & CLEAN EXPO Secretariat

c/o Japan Management Association, Industry Development Center

3-1-22, Shibakoen, Minato-ku, Tokyo 105-8522, Japan

TEL : +81-3-3434-1988 E-mail : bmhf-cl@jma.or.jp

Application Deadline

July 18th (Fri), 2025

Payment Deadline: August 29th (Fri), 2025



Japan's largest and the only Building Maintenance trade show!

An exhibition for showcasing technologies and equipment for building maintenance and cleaning industry, held in Tokyo and organized by Japan Management Association and Japan Building Maintenance Association.

Why Exhibit ?

Top Leading Exhibition for Building Maintenance In Japan



- POINT 1 > Exhibition for Facility Maintenance and Cleaning Technologies Organized by 2 Major Industrial Bodies.
- POINT 2 > Gather Building Maintenance Professionals, Building Owners, Manufacturers, Public Sectors, in 1 show.
- POINT 3 > Discover the up-to-date Technologies.

General Information

Date Nov. 19 (Wed) - 21 (Fri), 2025 10:00-17:00
Venue Tokyo Big Sight (Tokyo International Exhibition Center) West Hall
Organizer Japan Building Maintenance Association / Japan Management Association
Expected Exhibition Scale 150 exhibitors / 320 (including concurrent events)
Expected Visitors 13,000 (including concurrent events)

SCHEDULE

July 18th (Fri)	Final Application Deadline
August 29th (Fri)	Payment Deadline
Early September	●Up date Exhibitor my page ●Announcement of booth location Distribution of "Documents to be submitted" and "Exhibitor's Manual" / Explanation of regulations
Early October	●Deadline for submission of "Documents to be Submitted" ●Deadline for booth decoration (Smart Decoration Plan) (tentative) additional services
November 17 (Mon) - 18 (Tue)	Move-in 8:00 ~ 18:00
November 19 (Wed)	First Day of the Show
November 21 (Fri)	1. Final Day of the Show 2. Move-out 17:00 ~ 22:00

Exhibits

- Cleaning management
- Facility management/maintenance
- Sanitation management
- Disaster/crime prevention, security
- Infectious diseases countermeasures/sanitation management
- Value-added cleaning services
- Digital/DX
- Safety/quality management
- More efficient inspecting and reporting
- Labor shortage countermeasures



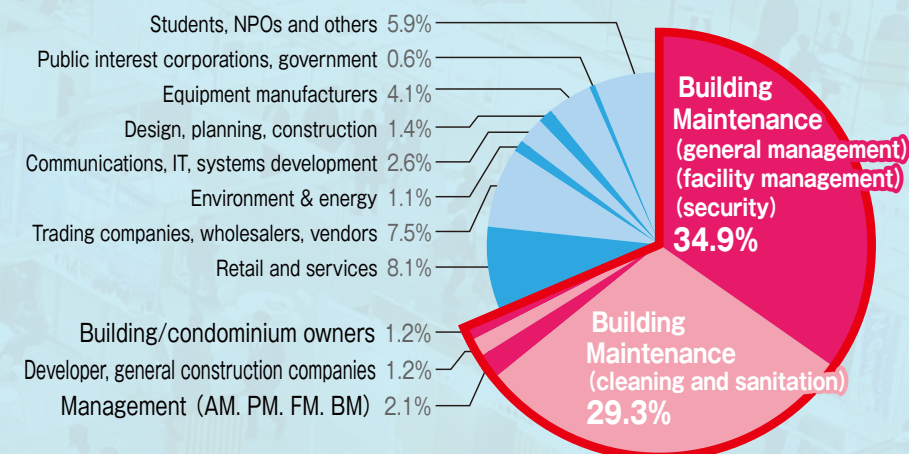
Visitor Profile

※From 2024 show report

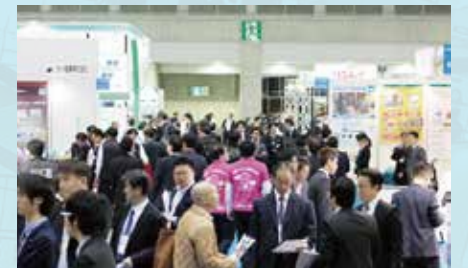
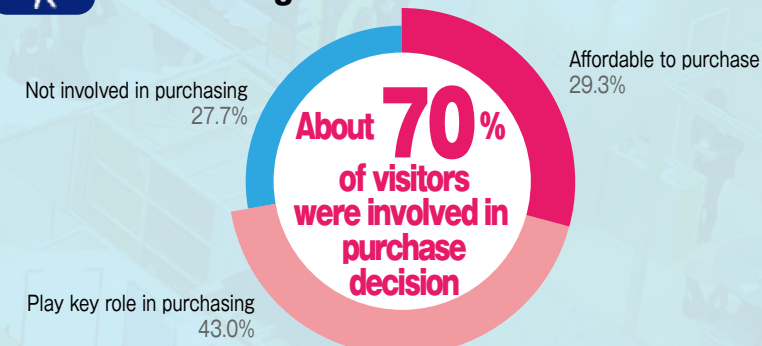


Visitors By Occupation

Number of Visitors:
13,005



Involvement in Procurement/
Purchasing?



BUILDING MAINTENANCE@CLEAN EXPO Secretariat

Japan Management Association **JMA**
TEL: +81-3-3434-1988 E-mail: bmhf-cl@jma.or.jp

<https://www.jma.or.jp/BMCL/en/>

